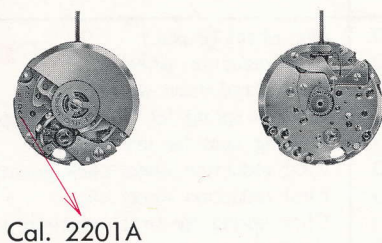
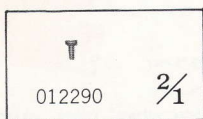
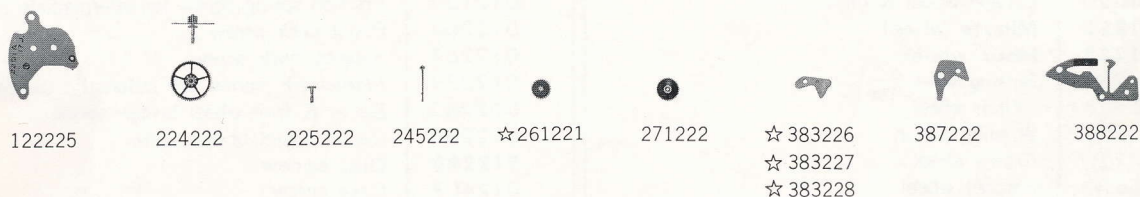


Calibre No.	2201A	Jewels	17j	Style Name
⇨ Basic Calibre 2205A 17J Catalog No. 22-05-1				



Characteristics

Casing diameter : 17.20 ϕ mm
 Maximum height : 5.15 mm
 Vibrations per hour : 28,800
 Automatic and auxiliary hand winding
 with sweep second
 "Diashock" Shock Resistant Device



Remarks : —continued—

Setting lever

There are three types of setting levers. They are used according to the structure of cases and types of winding stems. Select a suitable one by the following procedures referring to the shapes indicated in the photos and Fig. 1.

In case of a one-piece water-resistant case, if an incorrect setting lever for dial diameter is used the winding stem can not be pulled out or the movement cannot be set in the case. Attention must be paid to this point (Refer to Fig.2, Example of suitable setting lever).

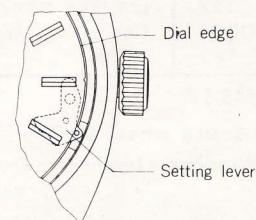
- ☆383226Used for watch with joint stem, or with ordinary winding stem other than one-piece or square type water-resistant case.
- ☆383227Used for one-piece water-resistant case with ordinary winding stem and dial of diameter 17.50~18.00 ϕ mm.
- ☆383228Used for one-piece water-resistant case with ordinary winding stem and dial of diameter 18.50~19.00 ϕ mm.

When parts number of the setting lever is unknown or when ordering setting levers other than the above, specify ① Cal. No., ② dial No. and ③ case No.

[Fig. 1]



[Fig. 2]



[Example of suitable setting lever]
Tail of the setting lever is located between the dial and the case.

☆⇨Please see remarks.

As for all other parts not shown here, please refer to the basic calibre

(Cal. No. **2205A** 17J Catalog No. 22-05-1 Red page).

Calibre No.	2201A	Jewels	Style Name
		17j	
⇨ Basic Calibre 2205A 17J Catalog No. 22-05-1			

PART NO.	LIST OF MATERIALS	PART NO.	LIST OF MATERIALS
112224	Barrel & train-wheel bridge	508220	Idle wheel (2 pcs.)
122225	Center wheel bridge	511220	First reduction wheel
161221	Pallet cock	514220	Second reduction wheel
171221	Balance cock	530220	Friction spring for intermediate pinion
191220	Framework for automatic device	542220	Rocking seat for idle wheel
201220	Complete barrel with arbor & mainspring	546220	First reduction wheel click guard
224222	Center wheel & pinion with cannon pinion	551220	First reduction wheel click
225222	Cannon pinion	553220	Click spring for first reduction wheel
231220	Third wheel & pinion	821220	Ball-bearing complete
241220	Fourth wheel & pinion	860220	Intermediate pinion for ratchet wheel
245222	Sweep second pinion	012121	Stud screw
251220	Escape wheel & pinion	012129	Friction spring screw for sweep second pinion
☆ 261221	Minute wheel	012129	Friction spring screw for intermediate pinion
271222	Hour wheel	012204	Pallet cock screw
281221	Setting wheel	012263	Balance cock screw
282223	Clutch wheel	012279	Framework screw for automatic device
283221	Winding pinion	012280	Barrel & train-wheel bridge screw
284220	Crown wheel	012280	Center wheel bridge screw
285220	Ratchet wheel	012290	Dial screw
301110	Jewelled pallet fork & staff	012407	Case screw
310221	Balance complete with stud	012422	Screw for oscillating weight
315220	Balance staff	012668	Click screw
331110	Roller with jewel	012670	Setting lever spring screw
341220	Regulator	012736	Minute wheel bridge screw
345220	Stud holder	012746	Screw for 1st reduction wheel click guard
☆351221	Winding stem	012751	Screw for ball-bearing complete
☆351222		011521	Upper hole jewel for center wheel
372220	Joint stem (movement portion)	011153	Lower hole jewel for center wheel
373250	Joint stem (case portion)	011542	Upper hole jewel for 3rd wheel
381220	Click	011542	Lower hole jewel for 3rd wheel
382110	Click spring	011541	Upper hole jewel for 4th wheel
☆ 383226	Setting lever	011528	Upper hole jewel for escape wheel
☆ 383227		011528	Lower hole jewel for escape wheel
☆ 383228		011713	Lower hole jewel for sweep second pinion
384220	Yoke (Clutch lever)	011505	Upper hole jewel for pallet
385220	Yoke spring (Clutch lever spring)	011505	Lower hole jewel for pallet
387222	Minute wheel bridge	013014	Tube for barrel & train-wheel bridge screw
388222	Setting lever spring	013014	Tube for center wheel bridge screw (long)
390221	Setting lever axle	013015	Tube for center wheel bridge screw (short)
396110	Friction spring for sweep second pinion	013017	Tube for yoke spring
481220	Crown wheel ring	013017	(Tube for setting lever spring screw)
491180	Dial washer	013017	Tube for setting lever spring screw
768220	Setting lever axle ring		
014603	Diashock upper frame		
014604	Diashock lower frame		
014605	Diashock hole jewel with frame		
011221	Diashock cap jewel		
014317	Diashock spring		
500221	Oscillating weight		

Remarks :

Minute wheel (☆261221) 261223 minute wheel also acceptable

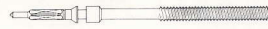
Winding stem ——— Refer to the photograph on the page of the basic calibre (Catalog No. 22-05-1) and shapes in the lower diagram. ———

☆351221 **Short** winding stem (Thread is provided completely on the crown portion.)

☆351222 **Long** winding stem (Thread is provided only on the end of the crown portion.)



☆351221



☆351222

—continued on front page—

☆⇨ Please see remarks.

Items in light letters are not shown in photos; those parts are interchangeable with the basic calibre

(Cal. No. **2205A** 17J Catalog No. 22-05-1 Red page).